



Southerly Point
Co-operative
Multi-Academy Trust

**An Introduction to
Southerly Point Co-operative
Multi-Academy Trust**

May 2021

Self Help Self Responsibility Equity Equality Democracy Solidarity
Social Responsibility Honesty Openness Caring for Others

Who's Who in Southerly Point Co-operative Multi-Academy Trust?

Our Central Team:



Donna Bryant

Chief Executive Officer



Richard Lawrence

Deputy Chief Executive Officer



Sean Pinhay

Chief Finance Officer



Maria Collins

Business Manager



Karen Teague

Administrator

Southerly Point Co-operative Multi-Academy Trust Organisation Chart

Members:

Andrew North [Co-operative Business Partner]

Askel Veur [Church Partner]

Simon Tregoning [Local Business Partner]

Dr Ian Luke [Education Partner]

Vacancy [Forum Partner]

Trustees / Trust Board:

Chair: Kevin Thomas

Vice Chair: Sean Davis

Executive Leader: Donna Bryant

Alan Horne

Kristin Pryor

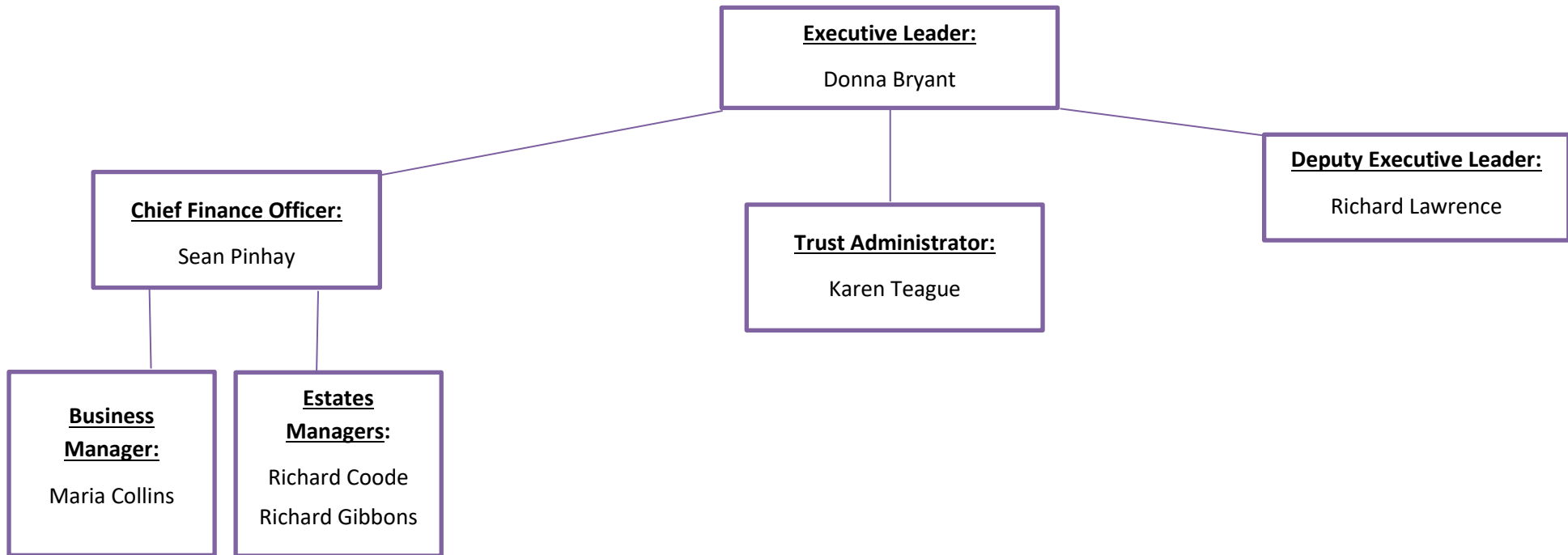
Susan Reynolds

Alan Hinchliffe

Karen Harris

Carrie Gilmore

Executive Team:



Company Secretary: Maria Collins

Clerk to Trustees: Karen Teague

Southerly Point Co-operative Multi-Academy Trust Governance Chart

Members:

The Members are responsible for ensuring the Trust adheres its founding principles and they hold the Trust Board to account.

Andrew North Askel Veur (represented by Katie Fitzsimmons) Simon Tregoning Dr Ian Luke Forum Vacancy

Trust Board:

The Trustees are responsible for the overall governance of the Trust. They set the strategic direction of the Trust and hold the Executive Leader / her team to account.

Chair: Kevin Thomas Vice Chair: Sean Davis Executive Leader: Donna Bryant
Alan Horne Kristin Pryor Susan Reynolds Alan Hinchliffe Karen Harris Carrie Gilmore

Trust Board Standards Committee:

Trustees: Sean Davis
Alan Hinchliffe
Kristin Pryor
Carrie Gilmore
Donna Bryant

Representatives from Local Governing Bodies

Trust Board Finance & Resources Committee:

Trustees: Alan Horne
Susan Reynolds
Kevin Thomas
Karen Harris
Donna Bryant

Representatives from Local Governing Bodies

Co-operative Spirituality and Wellbeing [C-SAW] Committee:

Trustees: Susan Reynolds
Donna Bryant

Vacancy

Representatives from Local Churches and Church Schools

Local Governing Bodies:

The Local Governing Body at each school works with the Headteacher to ensure the individual school is working effectively - providing an appropriate curriculum and helping the children to learn well and achieve highly.