



Southerly Point
Co-operative
Multi-Academy Trust

**An Introduction to
Southerly Point Co-operative
Multi-Academy Trust**

September 2018

Self Help Self Responsibility Equity Equality Democracy Solidarity
Social Responsibility Honesty Openness Caring for Others

Who's Who in Southerly Point Co-operative Multi-Academy Trust?

Our Schools: Our schools work together in Hubs. The Hub Leader provides support and challenge to the Headteachers to ensure our schools continue to improve and thrive.



Wayne Randle Hub Leader



Brett Dye Hub Leader



Richard Lawrence Hub Leader

Our Central Team:



Donna Bryant
Chief Executive Officer



Sean Pinhay
Chief Finance Officer



Dave Ellis
Estates Manager



Maria Collins
Business Manager



Lois Horne
Business Manager



Karen Teague
Administrator

Southerly Point Co-operative Multi-Academy Trust Organisation Chart

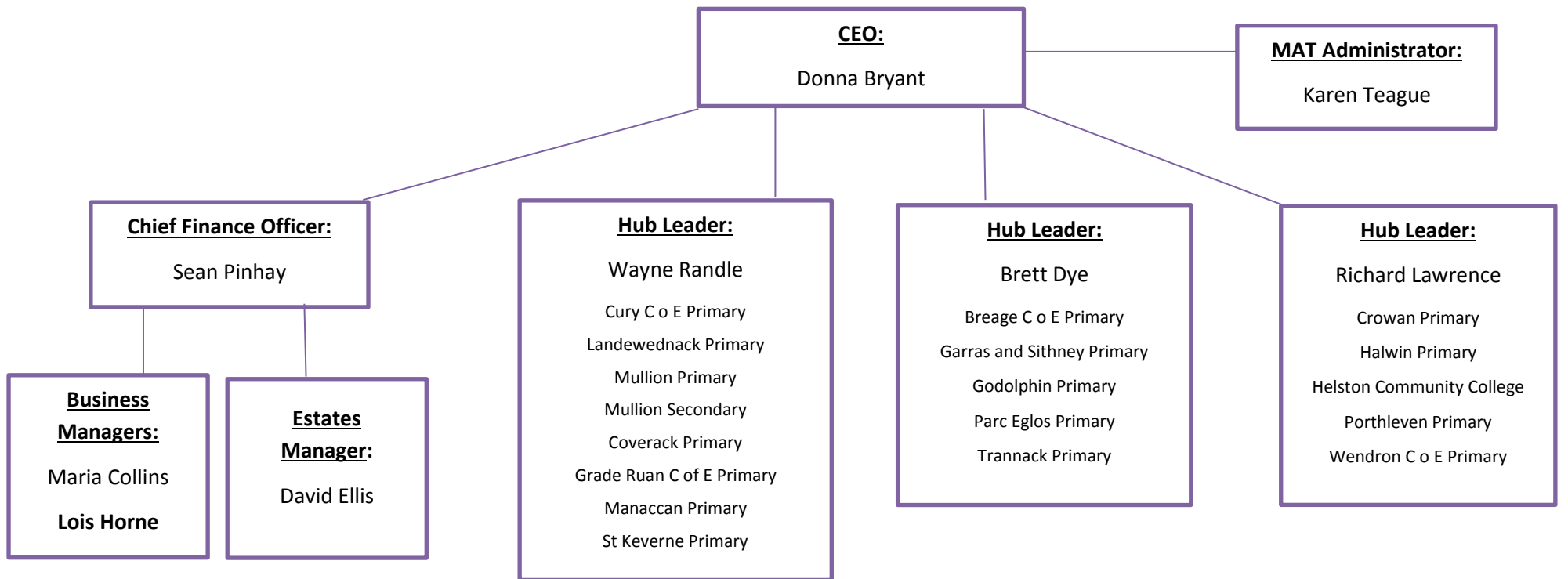
Members:

Andrew North [Co-operative Business Partner] Jo Osborne, for Askel Veur [Church Partner] Simon Tregoning [Local Business Partner]
Dr Ian Luke [Education Partner] Vacancy [Forum Partner]

Trustees / Trust Board:

Chair: Kevin Thomas Vice Chair: Sean Davis CEO: Donna Bryant
Catherine Bird Alan Horne Kristin Pryor Susan Reynolds Helena Arnold Pam Miller Tony Sanders

Executive Team:



Company Secretary: Maria Collins

Clerk to Trustees: Karen Teague

Southerly Point Co-operative Multi-Academy Trust Governance Chart

Members:

The Members are responsible for ensuring the Trust adheres its founding principles and they hold the Trust Board to account.

Andrew North Jo Osborne (Askel Veur) Simon Tregoning Dr Ian Luke Forum Vacancy

Trust Board:

The Trustees are responsible for the overall governance of the Trust. They set the strategic direction of the Trust and hold the CEO / her team to account.

Chair: Kevin Thomas Vice Chair: Sean Davis CEO: Donna Bryant
Catherine Bird Alan Horne Kristin Pryor Susan Reynolds Helena Arnold Pam Miller Tony Sanders

Trust Board Standards Committee:

Trustees: Sean Davis
Helena Arnold
Kristin Pryor
Pam Miller
Donna Bryant
Representatives from Mullion Hub, Parc Eglos Hub and Wendron Hub

Trust Board Finance & Resources Committee:

Trustees: Catherine Bird
Alan Horne
Susan Reynolds
Tony Sanders
Kevin Thomas
Donna Bryant
Representatives from: Mullion Hub, Parc Eglos Hub and Wendron Hub

Co-operative Spirituality and Wellbeing [C-SAW] Committee:

Trustees: Helena Arnold
Donna Bryant
Vacancy
Representatives from Local Churches and Church Schools

Local Governing Bodies:

The Local Governing Body at each school works with the headteacher to ensure the individual school is working effectively - providing an appropriate curriculum and helping the children to learn well and achieve highly.