



Southerly Point  
Co-operative  
Multi-Academy Trust

**An Introduction to  
Southerly Point Co-operative  
Multi-Academy Trust**

**Self Help Self Responsibility Equity Equality Democracy Solidarity**  
**Social Responsibility Honesty Openness Caring for Others**

## Who's Who in Southerly Point Co-operative Multi-Academy Trust?

**Our Schools:** Our schools work together in Hubs. The Hub Leader provides support and challenge to the Headteachers to ensure our schools continue to improve and thrive.



**Wayne Randle** Hub Leader



**Brett Dye** Hub Leader



**Richard Lawrence** Hub Leader

### **Our Central Team:**



**Donna Bryant**  
Chief Executive Officer



**Sean Pinhay**  
Chief Finance Officer



**Dave Ellis**  
Estates Manager



**Maria Collins**  
Business Manager



**Lois Horne**  
Business Manager



**Karen Teague**  
Administrator

## Southerly Point Co-operative Multi-Academy Trust Organisation Chart

### Members:

Andrew North [Co-operative Business Partner]

Jo Osborne, for Askel Veur [Church Partner]

Simon Tregoning [Local Business Partner]

Dr Ian Luke [Education Partner]

Vacancy [Forum Partner]

### Trustees / Trust Board:

Chair: Kevin Thomas

Vice Chair: Sean Davis

CEO: Donna Bryant

Catherine Bird

Alan Horne

Kristin Pryor

Susan Reynolds

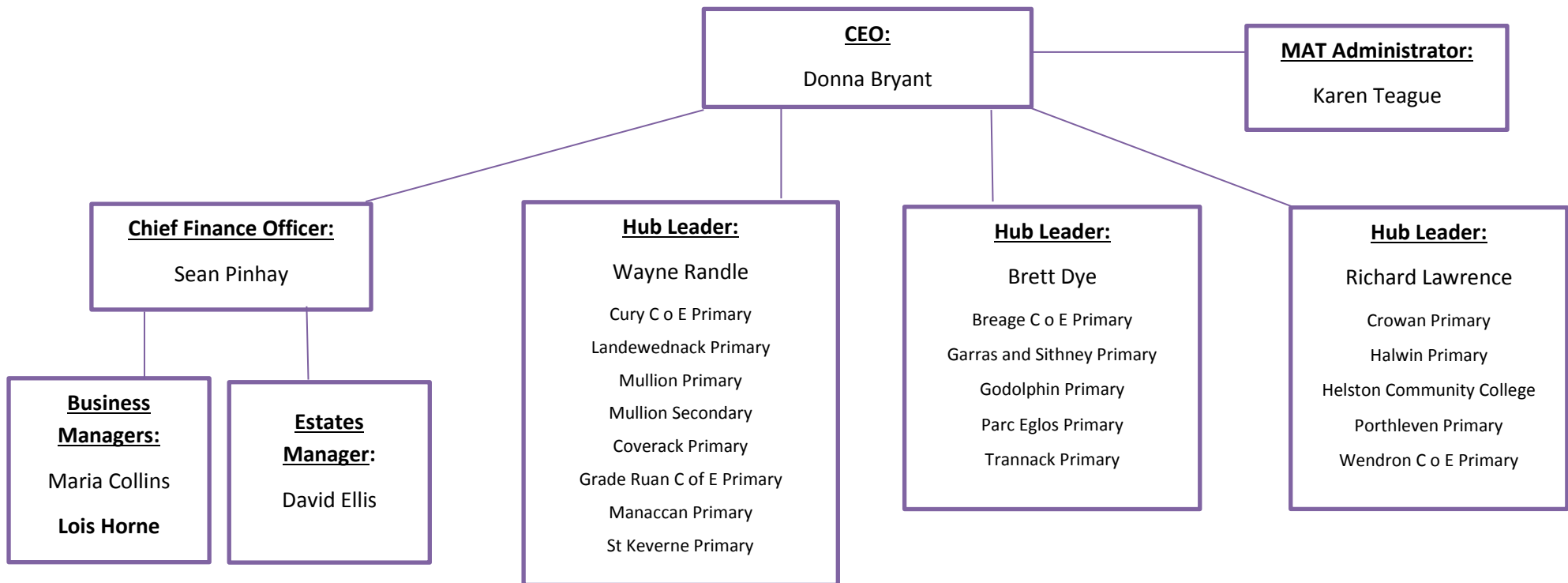
Peter Johnson

Helena Arnold

Pam Miller

Tony Sanders

### Executive Team:



**Company Secretary:** Maria Collins

**Clerk to Trustees:** Karen Teague

## **Southerly Point Co-operative Multi-Academy Trust Governance Chart**

### **Members:**

**The Members are responsible for ensuring the Trust adheres its founding principles and they hold the Trust Board to account.**

Andrew North      Jo Osborne (Askel Veur)      Simon Tregoning      Dr Ian Luke      Forum Vacancy

### **Trust Board:**

**The Trustees are responsible for the overall governance of the Trust. They set the strategic direction of the Trust and hold the CEO / her team to account.**

Chair: Kevin Thomas      Vice Chair: Sean Davis      CEO: Donna Bryant

Catherine Bird      Alan Horne      Kristin Pryor      Susan Reynolds      Peter Johnson      Helena Arnold      Pam Miller      Tony Sanders

### **Trust Board Standards Committee:**

Trustees: Sean Davis

Helena Arnold

Peter Johnson

Kristin Pryor

Pam Miller

Donna Bryant

Representatives from Mullion Hub, Parc Eglos Hub and Wendron Hub

### **Trust Board Finance & Resources Committee:**

Trustees: Catherine Bird

Alan Horne

Susan Reynolds

Tony Sanders

Kevin Thomas

Donna Bryant

Representatives from: Mullion Hub, Parc Eglos Hub and Wendron Hub

### **Co-operative Spirituality and Wellbeing [C-SAW] Committee:**

Trustees: Peter Johnson

Helena Arnold

Donna Bryant

Vacancy

Representatives from Local Churches and Church Schools

### **Local Governing Bodies:**

**The Local Governing Body at each school works with the headteacher to ensure the individual school is working effectively - providing an appropriate curriculum and helping the children to learn well and achieve highly.**